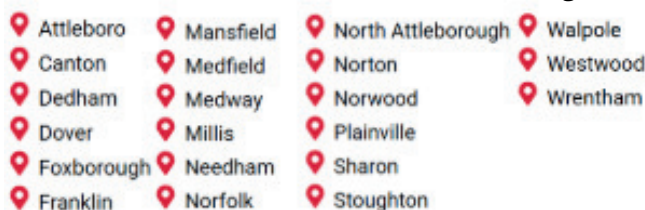
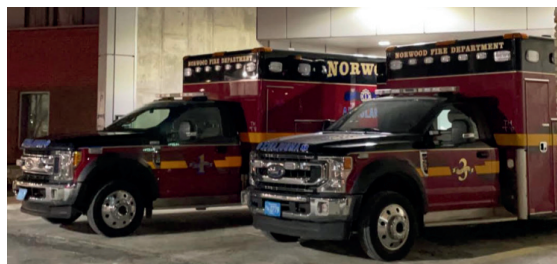


## Population Pressure

The Norwood Hospital catchment area includes over 452,000 full-time residents, and continues to grow.



Additionally in this region, there is Wrentham Outlets, Gillette Stadium, Legacy Place, University Station, and more, which brings tens of thousands of additional people on weekends, game days, and holidays. This inflated daytime population puts even more strain on public safety and other hospitals.



### Emergency Services:

- Nearby hospitals are overwhelmed, with rising ER wait times and longer ambulance trips.
- Norwood EMS and other towns are driving ~60 minutes roundtrip for every hospital transport.
- Due to travel time, ambulances are unavailable longer, meaning fewer crews for new emergencies.

### Delays = Higher Risk:

- The nearest ERs are miles away
- Travel time: 45-90+ minutes during peak time
- Public transit does not directly serve other hospitals from Norwood.
- Estimated round-trip taxi/Uber to Boston ER: \$60-\$90+ (without surge pricing)
- *Not everyone is able to drive or can afford a taxi or an ambulance*



In a cardiac arrest, brain damage can begin in 4-6 minutes... and now the nearest ER is almost an hour away.

## Take Action!

Visit [FinishTheJobNorwood.com](https://FinishTheJobNorwood.com) to stay informed and sign the "Letters to Legislative Leadership"

Use your voice and post on social media, write letters to local editors, or share your personal story using #FinishTheJob #FinishNorwoodHospital

### Let your elected officials know-

This is a regional healthcare emergency.

Ask them to:

- Push for a new hospital operator
- Demand accountability from MPT and Steward
- Support funding or policy changes to streamline a reopening
- Stay informed and keep your community updated

### Educated neighbors = stronger support.

- Share this info with friends and family in neighboring towns in the catchment area.
- Encourage neighboring towns to write letters supporting the campaign. Letter templates can be found on the website.



Facebook



Instagram



[FinishTheJobNorwood.com](https://FinishTheJobNorwood.com)



LinkedIn



Give Support

#FINISHNORWOODHOSPITAL



***This Isn't a Local Failure.***

***It's a Corporate One.***

- ✗ Norwood doesn't own the land.
- ✗ Norwood doesn't control the lease.
- ✗ Norwood didn't declare bankruptcy.
- ✓ Norwood is leading the recovery.



LEARN MORE



## Norwood Hospital

For over 100 years, Norwood Hospital served as a full-service acute care facility, providing emergency care, surgery, maternity, and more, to Norwood and 20+ surrounding communities. On average, Norwood Hospital served over 126,000 patients a year. Norwood Hospital was the only ER between Boston and Providence along the Route 1 corridor and was accessible via public transit (commuter rail, MBTA bus, etc.). In 2020, the hospital was destroyed and closed due to a flood caused by a historic storm. In August 2021, the Massachusetts Department of Public Health issued the emergency Determination of Need (DoN) to rebuild Norwood Hospital. Medical Properties Trust (MPT) has been rebuilding the hospital, but the previous operator, Steward Health Care, filed for Chapter 11 bankruptcy in Oct. 2024. This resulted in the Mass. DPH revoking Norwood Hospital's DoN. The hospital site remains privately owned by a real estate company, Medical Properties Trust, with no current operator.



**Today, the hospital remains unopened with no confirmed operator, leaving thousands of regional residents without reliable access to emergency care.**

## Who Owned & Ran The Hospital?



### Medical Properties Trust (MPT) owns the land.

- MPT is a real estate investment firm based in Alabama.
- They own the property where Norwood Hospital was.
- MPT doesn't provide healthcare, they just collect rent from hospital operators.
- MPT has had financial entanglements with Steward previously, which contributed to this crisis and now, MPT is still holding the keys.

#### *What Does This Mean:*

Until MPT adjusts the lease or sells the property to a responsible operator, there is no hospital.

### Steward Health Care was the operator.

- Steward ran Norwood Hospital before and after the historic 2020 flood.
- In 2024, they filed for Chapter 11 bankruptcy and gave up their license to reopen Norwood.
- Steward was one of the largest private hospital chains in the U.S. and racked up billions in debt.

#### *What Does This Mean:*

Steward walked away from Norwood Hospital, leaving no transition plan, no communication, and no emergency care for the 20+ communities in the region that the hospital served.

## Where Do Things Stand Today? (Summer 2025)

### A new operator needs to be secured

- **Steward Health Care** is now in Chapter 11 bankruptcy. A \$127 million loan was recently approved by the bankruptcy court to pursue legal claims against former Steward insiders and insurance providers- this may drag on until 2027.
- **MPT** still owns the site, and the rent expectations have scared off potential operators.
- State regulators revoked the hospital's **"Determination of Need" (DoN)** approval in 2024. The DoN approval process must be completed before any new operator can officially reopen the hospital.

#### **Construction:**

- MPT began rebuilding and the shell is almost complete.
- Without an operator, there's no clear timeline to reopen.
- Norwood Hospital is being **built but not operational.**



### Norwood Hospital Task Force

At the direction of Governor Maura Healey, Norwood General Manager Tony Mazzucco is leading a regional working group focused on reopening Norwood Hospital. This group includes health care providers, emergency services, public health officials, labor leaders, and elected representatives like Rep. Lynch, Senator Rush, and Rep. Rogers. Unlike other closed hospitals, Norwood has an active construction project and strong community momentum. The group's ultimate goal is finding a suitable operator for Norwood Hospital. As Rep. Lynch said: "Lives depend on it."